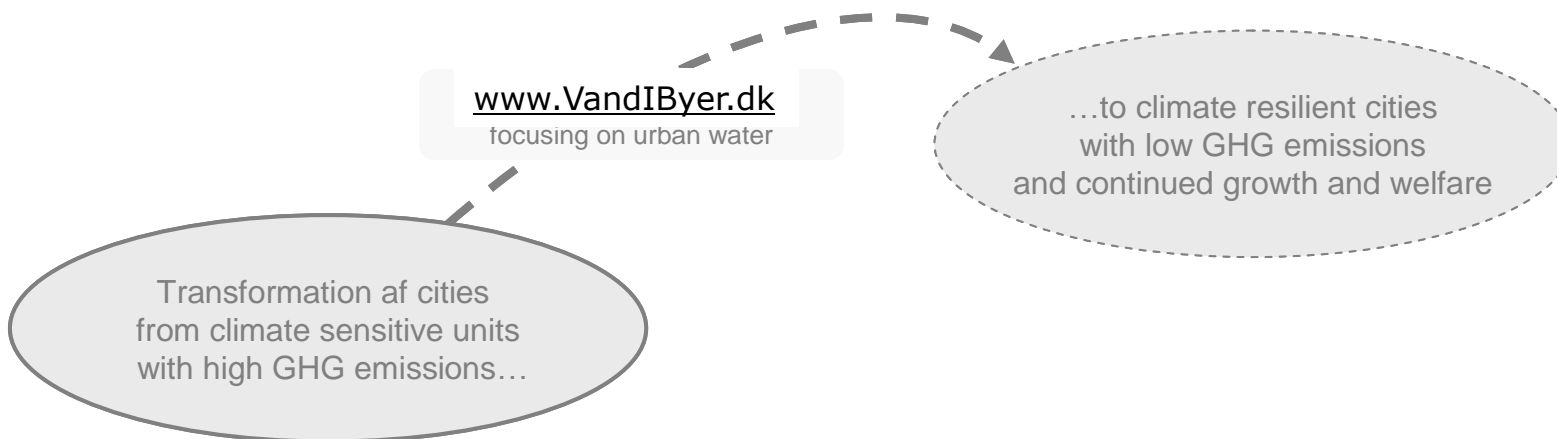


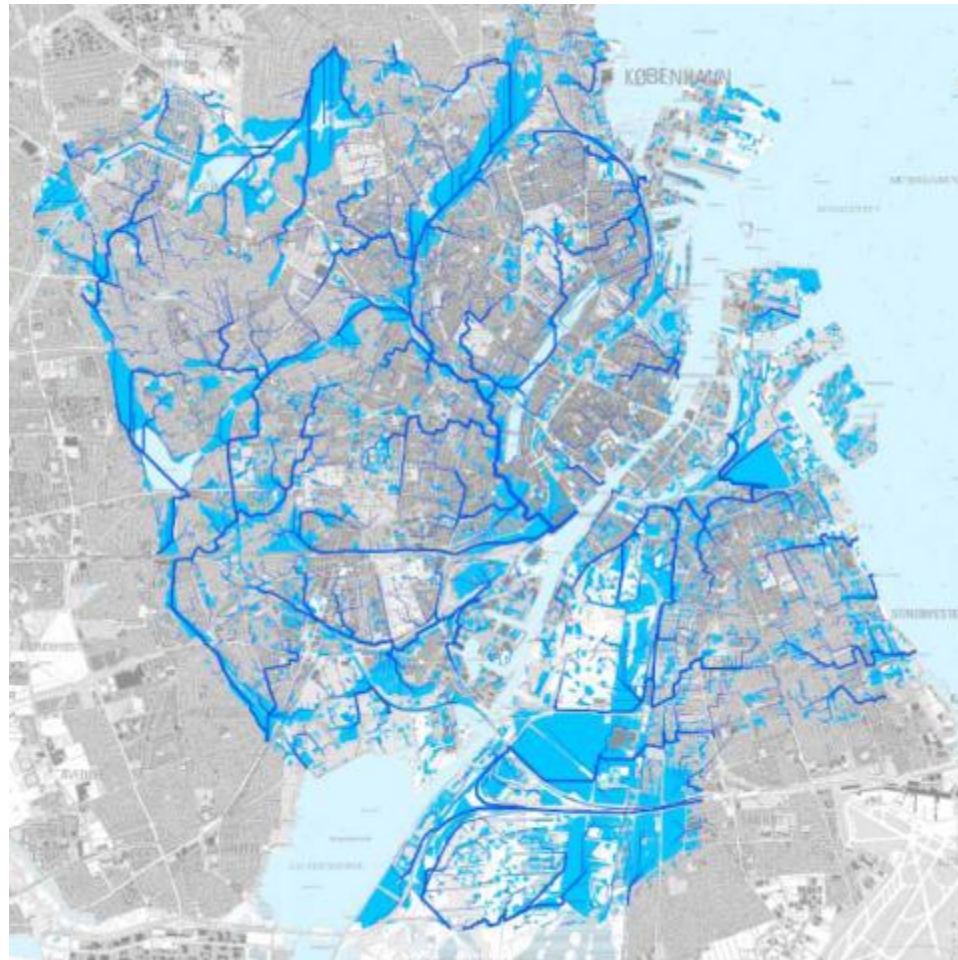
Facts

- 80 partners with DTU, KU, DHI and TI as lead
- Danish Research Council for Technology and Innovation
- 50% co-financing by privat and public stakeholders
- 1 af 3 partnerships
- Objective is to create: "significant strategic innovations that focuses on solving big challenges to the Danish society while at the same time enhance research, development, and innovation in the private sector." (my translation)

What do we aim to achieve?



Current and future problems: Too much water



Solutions are not simple



Many ideas and input are needed



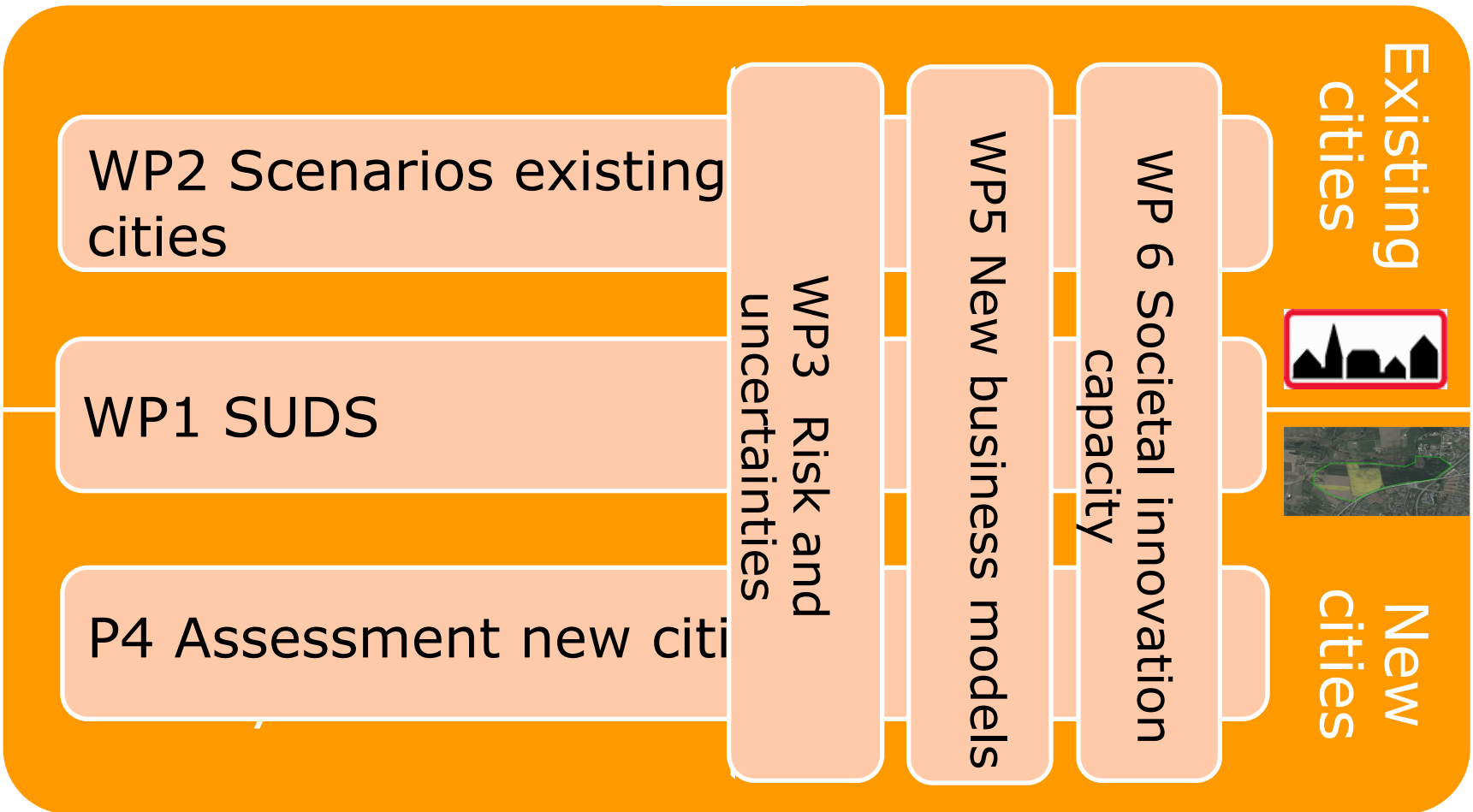
Options

	Option
1	Local management (Source control, infiltration etc)
2	Different planning practices (blue regions)
3	Treatment and discharge to local waters
4	Separating combined sewer systems
5	Change or differentiated service objectives
6	Contingency planning (soft and hard measures)
7	Increase sewer system capacity (capacity, storage, RTC)

Options and obstacles

	Option	Obstacles
1	Local management (Source control, infiltration etc)	Difficult, expensive and not sufficient by itself
2	Different planning practices (blue regions)	Change of procedures and objectives for city planning
3	Treatment and discharge to local waters	New technologies needed
4	Separating combined sewer systems	Difficult, expensive and not sufficient by itself
5	Change or differentiated service objectives	Expensive, equity issues, and illegal
6	Contingency planning (soft and hard measures)	Not sufficient by itself
7	Increase sewer system capacity (capacity, storage, RTC)	Out of sight out of mind, equity issues

Main activities in project



All innovation projects will have triple-helix structure

Each main activity will consist of a number of innovation projects:

- Min. 3 partners in a triple-helix project
- Min. one end user
- Min. one public institution
- Min. one private company
- Min one research/GTS institution
- Not supporting only one company

Usually there will be more than three partners

Each innovation project will have both a "vertical" and "horizontal" component, i.e. deal with at least two main activity issues.

Tech-transfer, knowledge sharing and dissemination also significant parts of the project

Partners, research and GTS-institutes

- DTU Environment
- KU Life
- DHI
- Teknologisk Institut
- AAU
- GEUS
- DMU



Partners, industry and constructors

- IBM
- Wavin
- KWH-pipe
- AcoNordic
- WaterCare
- Byggros
- Brøker A/S
- Nyrup Plast
- VegTech
- Nykilde
- NCC-Construction
- Per Aarsleff
- Thermo Logica



Partners, utilities

- Udviklingselskabet
- Københavns Energi
- Århus Vand og Spildevand
- Odense Vandselskab
- Greve Forsyning
- Nordvand
- Helsingør Forsyning
- Hvidovre Forsyning
- Middelfart Spildevand
- Bornholm Forsyning
- Faxe Forsyning
- Silkeborg Forsyning
- Sorø Forsyning



Partners, consultants and architects

- Grontmij|Carl-Bro
- COWI
- Alectia
- Niras
- Orbicon
- Moe & Brødsgaard
- Rambøll
- HedeDanmark
- SLA-arkitekter
- Thing & Wainø
- Geldof c.s.
- Henning Larsen Architects
- Bonnerup Consult ApS



Partners, public institutions

- By- og Landskabsstyrelsen
- Københavns Kommune
- Århus Kommune
- Odense Kommune
- Gladsaxe Kommune
- Albertslund kommune
- Allerød Kommune
- Helsingør Kommune
- Egedal Kommune
- Sorø Kommune
- **Brøndby Kommune**
- **Bornholms Regionskommune**
- **Guldborgsund Kommune**
- **Region Hovedstaden**
- **Region Midtjylland**
- **Vejdirektoratet**
- **Øresund Environment Academy**
- **Innovation Center Denmark**
- **Væksthus Midtjylland**

Partners, NGO etc

- DANVA, Dansk Vand og Spildevandsforening
- IDA, herunder IDA Miljø og Spildevandskomiteen
- Kommunernes Landsforening
- Danish Water Forum, herunder Forskningsplatformen Vand
- Kommunalteknisk Chefforening
- Dansk Byplanlaboratorium
- Dansk Miljøteknologi
- Danske anlægsentreprenører
- Copenhagen Cleantech Cluster
- Danish Water Services

What now?

3-4 months:

- Contract with research council negotiated
- Contract for Partnership negotiated
- Rules re. new partners
- First meeting and workshop
- Workshops on partnership level

12 months:

- Workshops on partnership and main activity level
- Innovation projects identified and initiated
- New partners accepted